

DIRECTED BY MISCHA GUREVICH

# THE PERFECT CANDIDATE

A FILM BY BALLETSHOFFER

Timberland 

BERLIN  
FASHION  
WEEK

BERLIN  
PROJEKT ZUKUNFT

  
Kofinanziert von der  
Europäischen Union

FASHION  
COUNCIL  
GERMANY

 *fabric house.com*

Coldharbour Lane



Berlin, July 2026 – BALLETSHOFER presents **THE PERFECT CANDIDATE**.

This season, BALLETSHOFER introduces The Perfect Candidate, a short film that marks a deliberate pause within the speed and spectacle of fashion week.

There are moments when life feels rehearsed, as if we are repeating the same gestures, the same conversations, the same decisions. In these cycles, we begin to ask ourselves where our individuality lies and what parts of us are shaped only by expectation. The line between authenticity and performance becomes blurred.

This film explores that fragile balance. Four characters, moving in union, embody the weight of conformity and the quiet search for self within a system that demands uniformity. What begins as a seamless display of control slowly fractures, revealing glimpses of vulnerability, memory, and the invisible pressures carried within.

It is not only about the characters but also about the audience, an invitation to reflect on our own participation in these patterns. The film is designed to question the comfort of rhythm and the unease of breaking it, to open a space where identity and anonymity coexist.



# ABOUT THE COLLECTION

The Perfect Candidate

**BALLETSHOFER**

Set in a dystopian office interior inspired by the British architecture of Nicholas Grimshaw, the film unfolds as four young candidates sit through a graduate entry interview.

Wearing the new BALLETSHOFER collection, shaped by the same themes as the script itself: alienation, routine, and the quiet search for individuality within a system that demands sameness. Drawing from the sterile aesthetics of corporate architecture and the repetitive rhythms of daily work life, the collection reflects a world where efficiency overshadows emotion and identity dissolves into uniformity.

Tailored silhouettes echo the precision of office attire, sharp, controlled, and exact, yet are softened by deliberate disruptions such as angled collars and subtle irregular patterns and wrinkles woven into the dress shirts and pants. The interplay of structured and fluid fabrics, combined with a muted color palette, reinforces the cold, mechanical atmosphere of the film's opening.





# ABOUT THE FILM

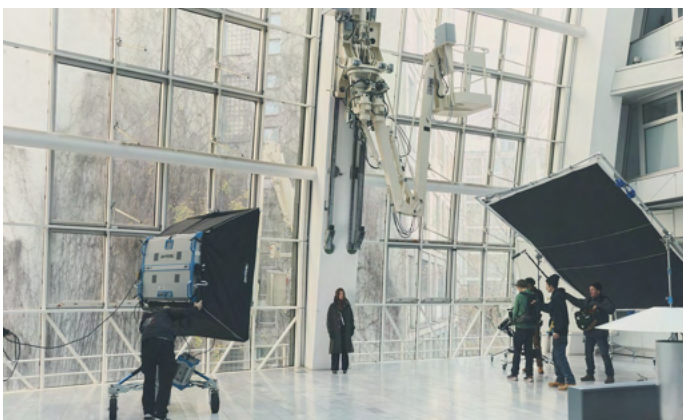
The Perfect Candidate

**BALLETSHOFFER**

Directed by Mischa Gurevich, the film stages an unsettling, sharply observed encounter between individuality and performance, clarity and collapse. The cast includes shooting stars Zethphan Smith Geist, Sira Anna Faal, Philip Günsch, Emma Schweiger and Evgenia Gurevich. Across the table sits an interviewer, Stefanie Giesinger, cold, distant, nearly mechanical, who asks questions stripped of warmth and humanity. The candidates respond with commands: commitment, focus, clarity, endurance. They comply. Slowly, they unravel.

When the interviewer finally asks the simplest question: „How would you describe yourself?“ there is no answer. Silence. Language collapses. What remains is presence. The candidates sit still, dressed in BALLETSHOFFER. Confident. Individualistic. The clothes become a reminder: beneath performative efficiency and rehearsed self-optimisation, there is something irreducible.

The film is deliberately restrained, both visually and rhythmically. Time stretches, then contracts. The interview becomes less about evaluation and more about exposure. What happens when systems demand total legibility, and individuality refuses to comply.



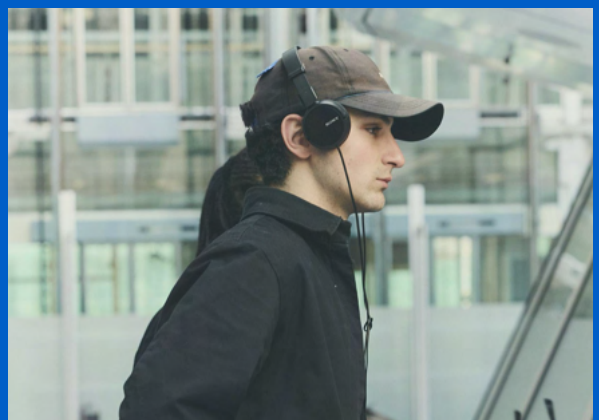
The Perfect Candidate is not a narrative of success or failure. It is a quiet confrontation with the language of productivity and the aesthetics of control.

In a season driven by noise and immediacy, BALLETSHOFFER proposes something else: stillness, tension, and the radical act of not knowing what to say.



“We wanted to create a film that feels like a short, very physical experience. I truly wanted to create a meandering of time and space, the uncanny, and the emotional imprint of a moment, by compressing both time and space into something immediate.”

– *Mischa Gurevich, Director*



“We really wanted to create a moment of absolute reflection throughout fashion week this year. This film is a moment for everyone, audience and press alike, to sit down and question.”

– *Alan Balletshofer, Designer*

# BEHIND THE FILM

The Perfect Candidate

**BALLETSHOFER**

This project was conceived and realized as a collective effort. From the beginning, it was important for Balletshofer to collaborate with people from the film industry in order to consciously connect the worlds of fashion and cinema, allowing each discipline to inform and elevate the other.

The film was executively produced by Coldharbour Lane, Pele Uibel's newly founded full-service creative agency, together with Alan Balletshofer and producer Nemanja Gavrilovic. Building on the initial script draft developed by Mischa and Alan, they, together with the Uibel brothers, worked in close dialogue to further refine both the script and the cinematographic approach, while assembling the behind-the-scenes team member by member.

This close collaboration ensured two smooth days of filming and resulted in a distinct cinematic perspective that situates the film between narrative cinema and fashion.

The shooting days themselves were intentionally designed by Mischa to mirror a real interview situation: actors were placed on waiting chairs outside the interview room prior to the scene, creating anticipation and psychological realism that subtly influenced their body language and presence once the interview began.





# COOPERATION WITH TIMBERLAND

The Perfect Candidate

**BALLETSHOFFER**

For this film, BALLETSHOFFER and TIMBERLAND continue their partnership while elevating iconic Timberland® silhouettes. The collaboration marks their fourth partnership, celebrating their shared values of craftsmanship, culture, and community.

The latest evolution features customized versions of Timberland's Authentic Loafer Shoe, Heritage Oxford, and Boat Shoe Mule, integrating outfit fabrics with footwear through a handcrafted removable buckle. This design creates a seamless transition from outfit to shoe, redefining the connection between craft and style.

A previously customized version of Timberland's Boat Shoe Mule, first presented during Berlin Fashion Week in July 2025, reappears in the short film, connecting past and present iterations of the collaboration.



Actor	EMMA SCHWEIGER STEFANIE GIESINGER SIRA ANNA FAAL PHILIP GÜNSCH EVGENIA GUREVICH ZETHIPHAN SMITH-GNEIST
Model	DANIEL OANTA LIAM KAREN VERES
Director / Writer	MISCHA GUREVICH
Writer	ALAN BALLETSHOFFER
Director of Photography	CHRISTOPHER BEHRMANN
Executive Producer	ALAN BALLETSHOFFER
Executive Producer	LANGSTON UIBEL
Executive Producer	PELE UIBEL
Producer	NEMANJA GAVRILOVIC
Co-Producer	PAUL ROSETTI
Production Manager	JOHAN LOVIS MATTAUSCH
First Assistant Director	NICI BRUECKNER
First Assistant Camera	TSVETOMIR LOUKANOV
Second Assistant Camera	SEAN BYRNE
Editor	GAO BASILE CHEN
Assistant Editor	MAHÉ RICHARD-SCHMIDT
Teaser Editing	GAO BASILE CHEN
Post-Production Producer	NEMANJA GAVRILOVIC
Colorist	JONNY THORPE
Color Grading Facility	MAKEMAKE - COLOR WITH PRIMARY
Color Supervisor	ALEX ZHAO
Key Grip	PABLO CAÑELLAS
Steadicam Operator	LEANDER BÜGE
Gaffer	ODYSSEUS SACIROVIC-KONSTANTINIDIS
Electrician	ALEX PATIKIDIS
Electrician / Pad Boy	FELICE BITZER
Electrician	SINA DARYAEI-TABAR
Electrician	JULA HEROLD
Best Boy Electrician	DAVID KILIAN
Sound Design	ADAM SMYTH
Sound Design Supervisor	HETTI COOK
Sound Design Company	STRING AND TINS
Song Title Walking Scene	AUTOMATIC - WOLFRAM, PEACHES
Sound Tech	FRANK FRIEDEMANN
Key Hair & Makeup Artist	HELY DOAN BEHRMANN
Assistant Hair & Makeup	ANNA CONZELMAN
Stylist	JONATHAN KOLBERG
Stylist Assistant	AARON VIKTOR
Stylist Assistant	LOTTA MICHELS
Set Design	PAUL ROSETTI
Set Design Assistant	LUEDER MONSEES
Atelier Intern	JONATHAN ACKERMANN
Behind the Scenes Photographer	BIRK ALISCH EMIL DIETRICH
Driver	BERNARDO MACEDO WEISS
Helping Hands / Runner	JOSEPHINE ZETA
Helping Hands / Runner	COSIMA WALLENTIN
Helping Hands / Runner	TIAGO NOLLER
Helping Hands / Runner	KILIAN DREHER
Helping Hands / Runner	EMIL GERLING

In Cooperation with **Timberland** 

DESIGNED BY **HOCHDREI**, GERMANY

Supported by